



# DELTA-XERO

THE FUTURE IS SYSTEM RELIABILITY

## DX-1001-T

The DX modular housing arrangement offers a flexible and space conscious solution to integrate our innovative DXO Cartridge in to both new and existing systems. The Delta-Xero system can be configured up to 12 cartridges in parallel as a single unit in a compact and easily maintainable layout.

The unit can be supplied with a number of standard options to provide an effective fluid conditioning and monitoring package to suit the majority of systems. The flexibility of the unit allows tailoring to customer's specific requirements.



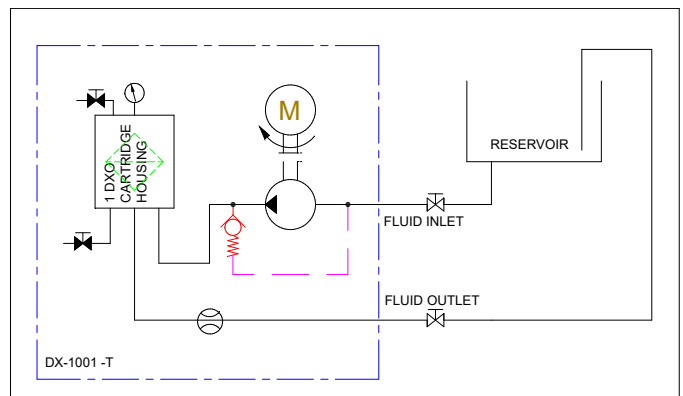
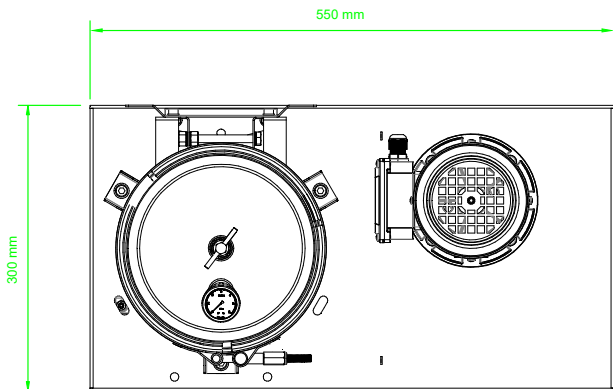
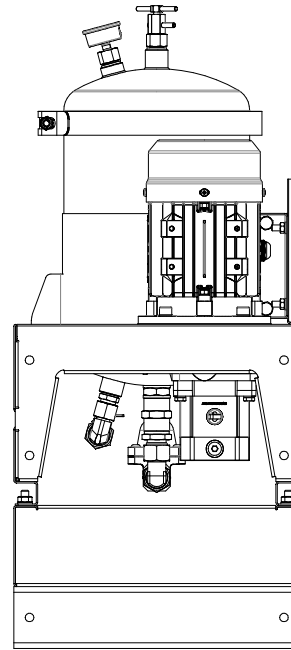
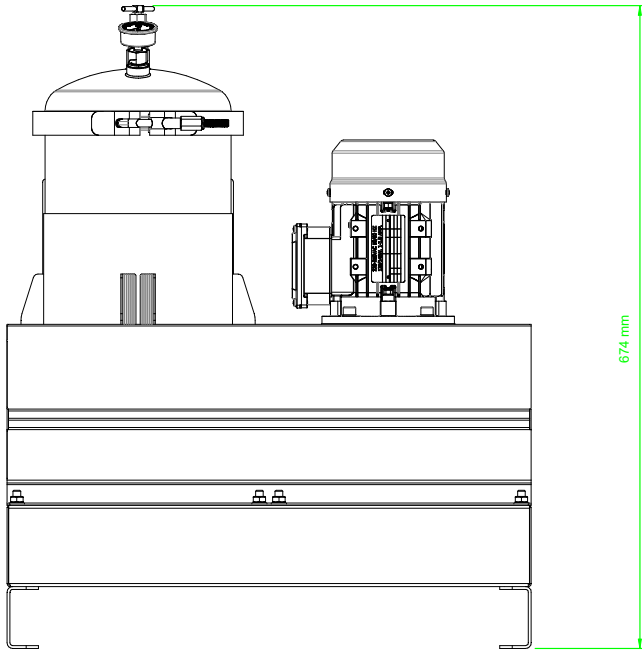
### DX1001-T

Drive Input	Electric or Pneumatic
Connection Ports	3/8" BSP In & Out
Flow Indicator	Visual
Suggested System Volume	Up to 2000l @ 32cSt
Flow Rate	1 lpm @ 32cSt
Particulate Removal	From 0.1 $\mu$
Weight	20 kg
Dimensions	H 674 mm x D 300 mm x L 550 mm
Material	SS316
DXO Cartridge QTY	1

© 2021 Delta-Xero All Rights Reserved. All information contained in this publication is indicative only and may be subject to change without prior notice.



## General Arrangement + Schematic



### Cartridge Data: DXO

Contaminated weight:	Up to 7kg
Water holding capacity, free and bound:	Approx. 2600ml
Material insert:	PP Cellulose mix

